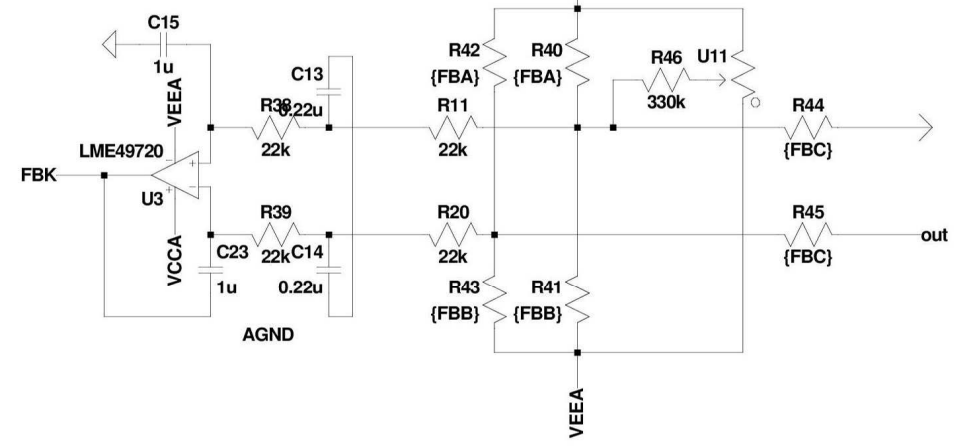
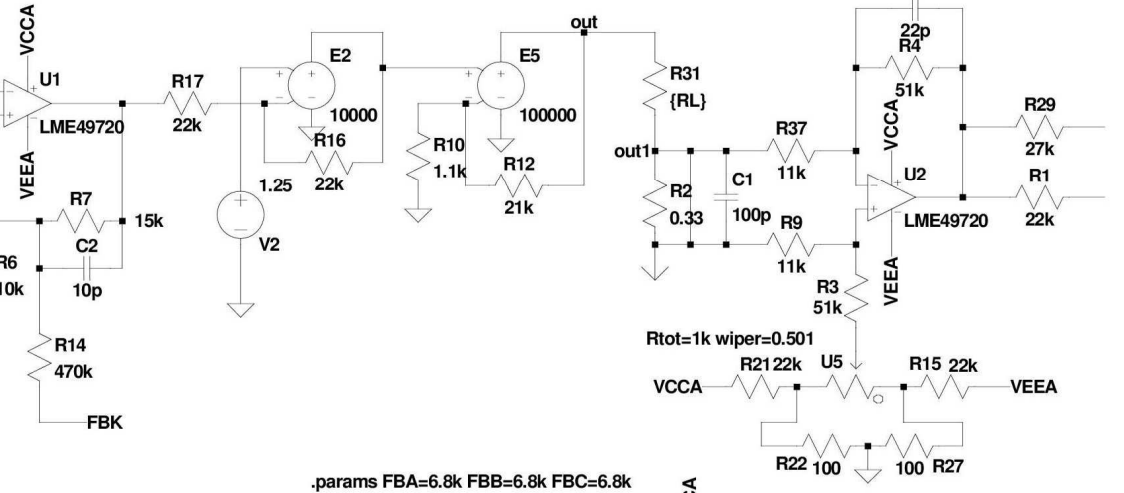
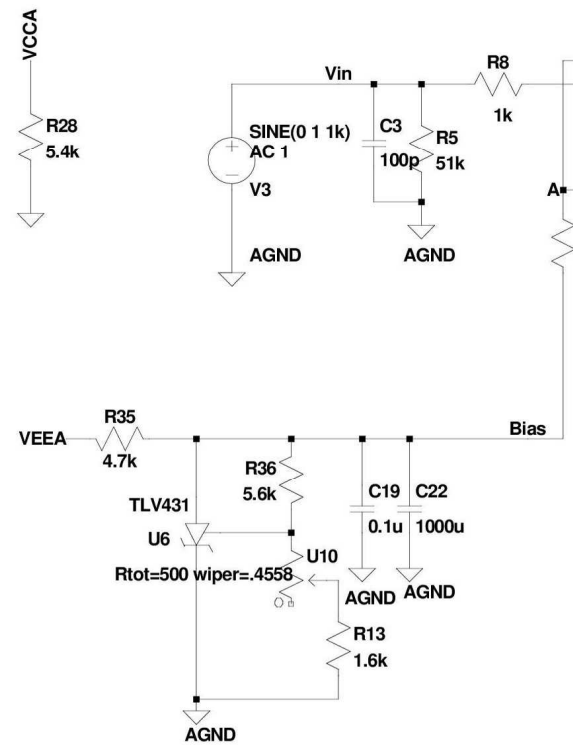


```

*.options noopiter
;dc V1 24 32 0.1 V5 -100m 100m 50m
*.step param E LIST 10m 30m 50m 90m
.ac oct 100 0.01 100k
.tran 0 10m 0 {1000m/65536}
;op
.meas tran P AVG V(out, out1)*I(R31)
.meas tran I RMS I(R31)
.meas tran E_PEAK MAX V(out)

```



Rtot=100 wiper=.2

.params FBA=6.8k FBB=6.8k FBC=6.8k

Rtot=100k wiper=0.501

Rtot=500 wiper=.4558